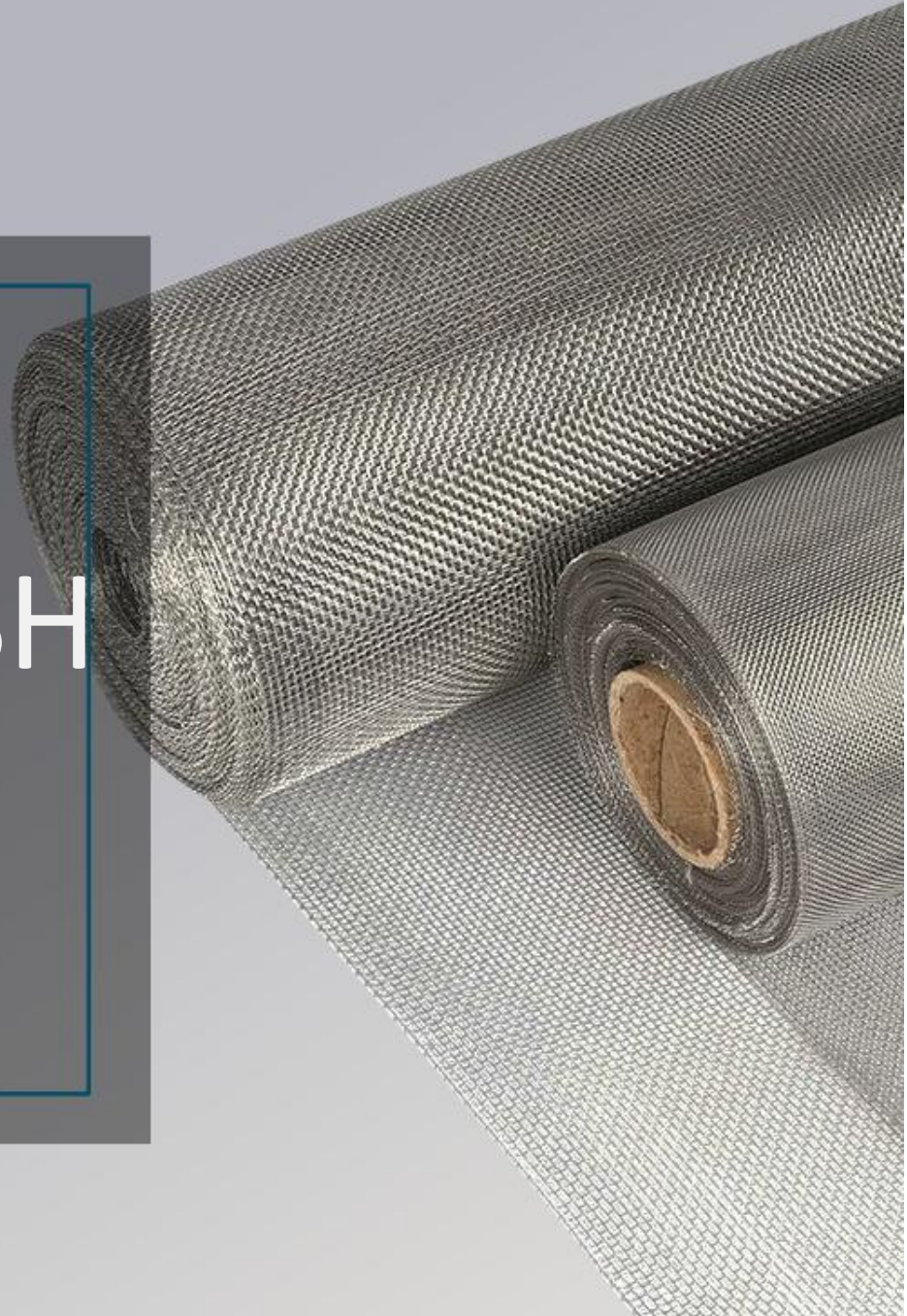




FILTALLOY TECHNOLOGY

# WOVEN WIRE MESH





# ABOUT US

## Fitalloy Technology Limited

Fitalloy is an advanced metal woven wire mesh manufacturer & supplier, with more than 20 years of experience. We have introduced the state of art machines and employed experienced technicians to supply high-performance, innovative materials, and solutions for applications in filtration and separation. Our products include:

- | Stainless Steel Wire Mesh
- | Aluminum Wire Mesh
- | Other Special Alloy Wire Mesh
- | Copper Wire Mesh
- | Hastelloy Wire Mesh
- | Mesh Filter & Strainers
- | Brass Wire Mesh
- | Monel Wire Mesh
- | Sintered Mesh Filter Elements
- | Bronze Wire Mesh
- | Inconel Wire Mesh
- | V Wire Mesh

Our products are widely used in numerous industries including aerospace, oil and gas, petrochemical, water, mine, polymer, food & beverage, automotive, and many other filtration and separation industries. With so many applications, we have built the R&D, design, machining, sales, and quality control departments. With the design and tailored solutions, we then translate them into high-level products. And our team has been learning about the forefront of filtration technology from industrial leading companies. Here customers could get high-quality products at an economic price!

# MISSION & VISION

No matter in industrial production or our daily life, filtration plays a critical role and helps to contribute to sustainable development and clean our life, such as purifying water and air.



## OUR MISSION - FINDING OPTIMAL FILTRATION SOLUTIONS

Focusing on customers' requirements, our mission is to continuously improve our technique, and provide customers with the optimal filtration solution and best services. Our solution is reducing cost by improving efficiency, shortening the production period, delivering stock goods soon, and so on.

## Why Choose Us?

### High Flexibility

With support from the professional technical department, our staff works with clients to identify the best filter element type and adapt alloy material for their application/requirements.

### Rich Experience

Our skilled production team helps to make your prototype come real. With over 20 years of experience, we have the confidence to supply customized products that meet and exceed your product requirements.

### Cost Analysis

In many cases the lowest cost product may backfire and really cost you more in the end, we will provide our customers with different choices and do a cost analysis to find the most cost-effective one.

### First-class Customer Service

With support from our technical department, our sales team gives a quick turnabout and first-class service as we will learn more about your needs and share more info with you.

### Quality Control

Every aspect of the quality control circle is concerned, from the supply chain, production management, QC system, packing, inventory system, inspection, and after-sales services.

### Application Engineering

We pay high interest to new applications for our products. Welcome to consult, we will help to suggest from the tech and production aspect, and let's develop your idea together.

### Certificate

All our products are tested by our test team before shipment. To meet different requirements of our clients, we can find a third party to test and issue the SGS certificate.

### Stock Availability

We have rich stock of woven wire mesh, the material ranges from SS304, SS316, SS316L, brass, copper, bronze to special alloy such as nickel, titanium, Hastelloy, Inconel, Monel, etc.



DESIGN A FILTER



ADDITIONAL PROCESS



BESPOKE SERVICE



## OUR VISION - SAFER, HEALTHIER AND CLEANER WORLD

Our vision is to make the world much safer, healthier, and cleaner with our filtration and separation products. To fulfill this aim, we are willing to improve ourselves and overcome each difficulty. That drives us. Many customers choose to cooperate with us because we are a professional and reliable partner. To go further, we'll continuously pay more attention to technique and machine.

## OUR COMPANY IN NUMBERS

**20+**

Years' Experience

**100+**

Countries We Deliver

**1,000+**

Filter Product Choices

**100%**

Customer Satisfaction

## QUALITY CONTROL SYSTEM

Supply System

QC System

Inventory System

After-Sale Service System

01

02

03

04

05

06

07

Production Management

Packaging System

Inspection System

# WOVEN MESH TYPE

**Woven wire mesh**, the most commonly used metal mesh, perfectly combines the high strength of steel and resistance to corrosion by adding chromium, nickel, etc. Woven mesh is very flexible to adjust wire diameter and aperture sizes for enormous filtration micron rates. They are very popular in the field of industrial filtration, no matter to purify liquid, clean air, or sieve solid particles. Moreover, they also perform well as shielding screens, window screens, and other architectural decorative screens.

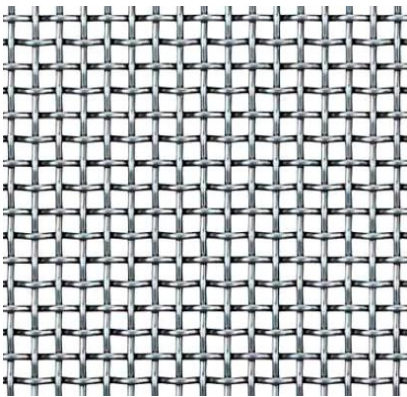
## Specifications:

- Rollwidth: Standard 1m and 1.2m, super width plain woven mesh to 15m can be customized.
- Rolllength: Standard 30m per roll, can adjust according to client's length request
- Edge type: available normaedge, selvage edge, plasma cut, laser cut
- Shapes: available in rolls, as cut from the roll, pre-cut to size or formed into shapes, welded or edges, etc.
- Packing method: Hard paper tube then wrapped with bubbled film, and put into wooden case
- Mesh size chart details read more

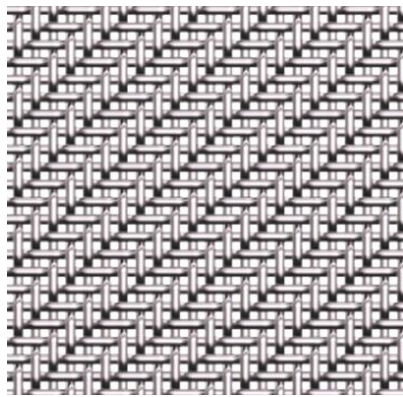


## Advantages:

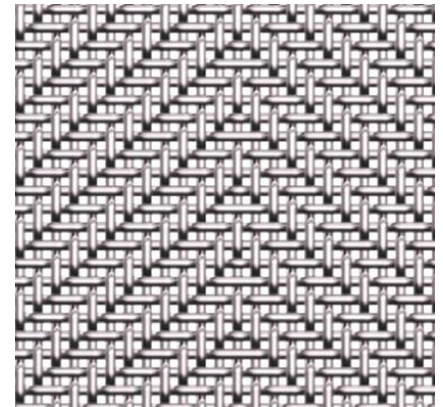
- High tensile strength and ductility
- Low yield strength
- High-temperature resistance
- Flexible and malleable to create a wide range of filter elements
- Easy to be welded and pressed to different shapes



Plain Weave



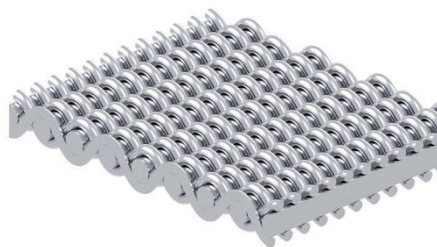
Twilled Weave



Herringbone Twilled Weave



PLAIN-DUTCH-WEAVE-MESH



REVERSED-PLAIN-DUTCH



REVERSED-DUTCH-TWILLED

# WOVEN MESH MATERIAL

Different Countries Stainless Steel Material Code			
Material	EN CODE	US CODE	EN CODE
Stainless steel DIN17470 DINEN10088-3 DINEN10095	X6Cr17	AISI 430	1.4016
	X5CrNi18-10	AISI 304	1.4301
	X2CrNi19-11	AISI 304L	1.4306
	X10CrNi18-8	AISI 301/302	1.4310
	X5CrNiMo17-12-2	AISI 316	1.4401
	X2CrNiMo17-12-2	AISI 316L	1.4404
	X2CrNiMo18-14-3	AISI 316L	1.4435
	X3CrNiMo17-13-3	AISI 316L	1.4436
	X2CrNiMo18-15-4	AISI 317L	1.4438
	X1 NiCrMoCu25-20-5	AISI 904L	1.4539
	X6CrNiTi18-10	AISI 321	1.4541
	X6CrNiNb18-10	AISI 347	1.4550
	X3CrNiCu18-9-4	AISI 304Cu	1.4567
	X6CrNiMoTi17-12-2	AISI 316Ti	1.4571
	X15CrNi20-12	AISI 309	1.4828
	X15 CrNi25-20	AISI 314	1.4841
	X12CrNi21-25	AISI 310S	1.4845

Special Alloy Material Code In Different Countries			
Material	EN CODE	EN CODE	US CODE
Brass DIN EN 12166	CuZn10	CW501L	C22000
	CuZn15	CW502L	C23000
	CuZn20	CW503L	024000
	CuZn36	CW507L	C27000
Bronze DIN EN 12166	CuSn14	CW450K	C51100
	CuSn6	CW452K	C51900
	CuSn8	CW453K	C52100
Copper DIN EN 13602	E-Cu58	2.0065	—
Nickel DIN 17740	Ni 99,2/N199,6	2.4066	NO2200
Aluminium DIN EN 573-3	EN AW-5019 (AlMg5)	3.3555	5056A



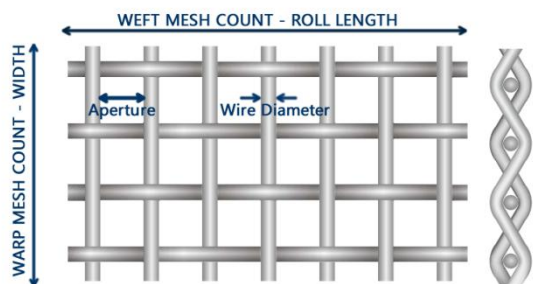
Copper Wire Mesh



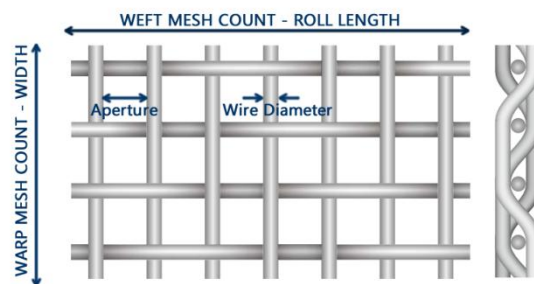
Brass Wire Mesh

# SPECIFICATION - PLAIN & TWILLED WEAVE

Plain Weave



Twilled Weave



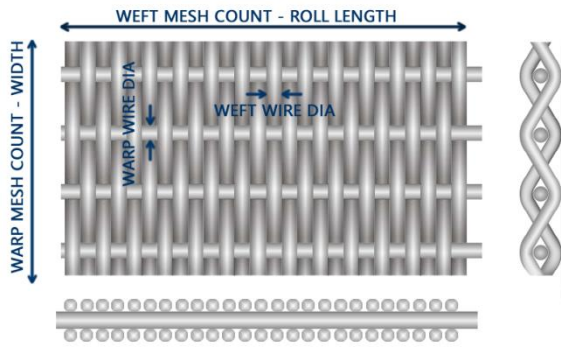
Code	Mesh	Wire Diameter		Aperture		Open Rate	Weight kg/m <sup>2</sup>
		mm	inch	mm	inch		
SSM001203	1 × 1	2.03	0.08	23.37	0.92	0.846	2.002
SSM002160	2 × 2	1.6	0.063	11.1	0.437	0.764	2.494
SSM003137	3 × 3	1.37	0.054	7.09	0.279	0.701	2.762
SSM004160	4 × 4	1.6	0.063	4.75	0.187	0.56	5.106
SSM004119	4 × 4	1.19	0.047	5.16	0.203	0.659	2.806
SSM005104	5 × 5	1.04	0.041	4.04	0.159	0.632	2.675
SSM006089	6 × 6	0.89	0.035	3.35	0.132	0.627	2.343
SSM008071	8 × 8	0.71	0.028	2.46	0.097	0.602	2.002
SSM010064	10 × 10	0.64	0.025	1.91	0.075	0.563	2.007
SSM010051	10 × 10	0.51	0.02	2.03	0.08	0.64	1.272
SSM012058	12 × 12	0.584	0.023	1.52	0.06	0.518	2.056
SSM012051	12 × 12	0.508	0.02	1.6	0.063	0.572	1.539
SSM014058	14 × 14	0.584	0.023	1.22	0.048	0.452	2.426
SSM014051	14 × 14	0.508	0.02	1.3	0.051	0.51	1.812
SSM016046	16 × 16	0.457	0.018	1.13	0.0445	0.507	1.681
SSM018043	18 × 18	0.432	0.017	0.98	0.0386	0.483	1.695
SSM020051	20 × 20	0.508	0.02	0.76	0.03	0.36	2.689
SSM020041	20 × 20	0.406	0.016	0.86	0.034	0.462	1.676
SSM024036	24 × 24	0.356	0.014	0.7	0.0277	0.442	1.549
SSM030033	30 × 30	0.33	0.013	0.52	0.0203	0.371	1.695
SSM030031	30 × 30	0.305	0.012	0.54	0.0213	0.408	1.432
SSM030023	30 × 30	0.229	0.009	0.62	0.0243	0.531	0.784
SSM035028	35 × 35	0.279	0.011	0.45	0.0176	0.379	1.413
SSM040025	40 × 40	0.254	0.01	0.38	0.015	0.36	1.345

Code	Mesh	Wire Diameter		Aperture		Open Rate	Weight kg/m <sup>2</sup>
		mm	inch	mm	inch		
SSM050023	50 × 50	0.229	0.009	0.28	0.011	0.303	1.384
SSM050020	50 × 50	0.203	0.008	0.31	0.012	0.36	1.077
SSM060019	60 × 60	0.191	0.0075	0.23	0.0092	0.305	1.155
SSM060018	60 × 60	0.178	0.007	0.25	0.0097	0.339	0.994
SSM070017	70 × 70	0.165	0.0065	0.2	0.0078	0.298	1.013
SSM080017	80 × 80	0.165	0.0065	0.15	0.006	0.23	1.13
SSM080014	80 × 80	0.14	0.0055	0.18	0.007	0.314	0.823
SSM090013	90 × 90	0.127	0.005	0.16	0.0061	0.301	0.77
SSM100114	100 × 100	0.114	0.0045	0.14	0.0055	0.303	0.692
SSM100102	100 × 100	0.102	0.004	0.15	0.006	0.36	0.536
SSM100089	100 × 100	0.089	0.0035	0.17	0.0065	0.423	0.404
SSM110102	110 × 110	0.1016	0.004	0.1295	0.0051	0.307	0.604
SSM120094	120 × 120	0.094	0.0037	0.1168	0.0064	0.307	0.565
SSM150066	150 × 150	0.066	0.0026	0.1041	0.0041	0.374	0.346
SSM160064	160 × 160	0.0635	0.0025	0.0965	0.0038	0.364	0.289
SSM180058	180 × 180	0.0584	0.0023	0.0838	0.0033	0.347	0.326
SSM200053	200 × 200	0.0533	0.0021	0.0737	0.0029	0.336	0.302
SSM250041	250 × 250	0.0406	0.0016	0.061	0.0024	0.36	0.214
SSM270041	270 × 270	0.0406	0.0016	0.0533	0.0021	0.322	0.229
SSM300038	300 × 300	0.0381	0.0051	0.0457	0.0018	0.297	0.148
SSM325036	325 × 325 *	0.0356	0.0014	0.0432	0.0017	0.3	0.214
SSM400025	400 × 400 *	0.0254	0.001	0.37	0.0015	0.36	0.161
SSM500025	500 × 500 *	0.0254	0.001	0.0254	0.001	0.25	0.185
SSM635020	635 × 635 *	0.0203	0.0008	0.0203	0.0008	0.25	0.128

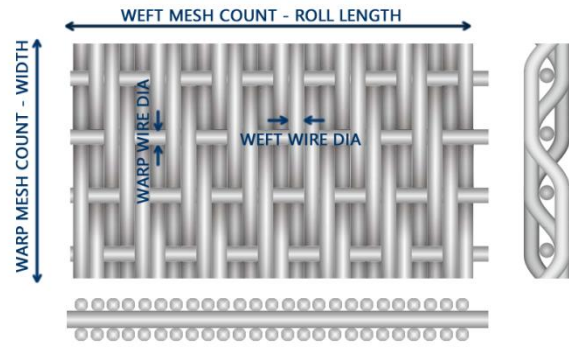


# SPECIFICATION - PLAIN & TWILLED DUTCH

Plain Dutch Weave



Twilled Dutch Weave

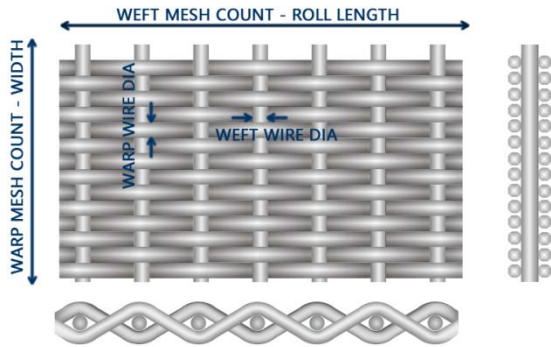


Code	Mesh Warp x Weft	Wire Diameter Warp x Weft	Aperture (um)	Weight (kg/m2)
SSD008062	8 x 62	0.63mm x 0.45mm	300	5.42
SSD010079	10 x 79	0.50mm x 0.355mm	250	3.16
SSD012064	12 x 64	0.58mm x 0.40mm	280	2.9
SSD014088	14 x 88	0.40mm x 0.30mm	180	2.54
SSD019140	19 x 140	0.315mm x 0.20mm	140	1.88
SSD020300	20 x 300	0.35mm x 0.20mm	178	3.6
SSD024110	24 x 110	0.355mm x 0.25mm	120	2.45
SSD025140	25 x 140	0.28mm x 0.20mm	100	1.95
SSD030150	30 x 150	0.25mm x 0.18mm	80	1.68
SSD035175	35 x 175	0.224mm x 0.16mm	71	1.52
SSD040200	40 x 200	0.20mm x 0.14mm	60	1.40
SSD045250	45 x 250	0.16mm x 0.112mm	56	1.09
SSD050250	50 x 250	0.14mm x 0.11mm	53	1.04
SSD055280	55.5 x 280	0.14mm x 0.10mm	50	0.92
SSD065330	65 x 330	0.11mm x 0.08mm	36	0.71
SSD070350	70 x 350	0.11mm x 0.08mm	35	0.72
SSD070385	70 x 385	0.11mm x 0.07mm	32	0.75
SSD078700	78 x 700	0.11mm x 0.08mm	30	1.39
SSD080400	80 x 400	0.10mm x 0.065mm	40	0.62

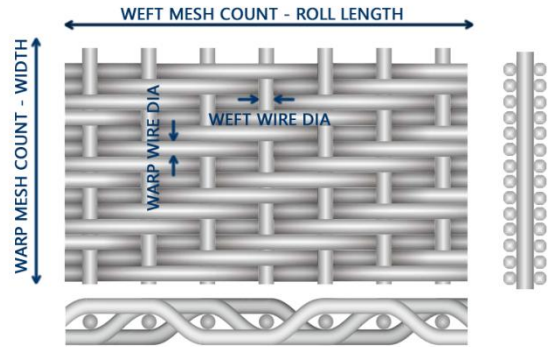
Code	Mesh Warp × Weft	Wire Diameter Warp × Weft	Aperture (um)	Weight (kg/m <sup>2</sup> )
SSD080600	80 x 600	0.10mm x 0.06mm	36	0.74
SSD080800	80 x 800	0.15mm x 0.04mm	51	0.77
SSD081780	81 x 780	0.10mm x 0.07mm	30	1.22
SSD090550	90 x 550	0.12mm x 0.05mm	39	0.667
SdT091787	91 x 787 *	0.10mm x 0.07mm	25	1.24
SdT101900	101 x 900 *	0.10mm x 0.063mm	20	1.22
SdT120400	120 x 400 *	0.10mm x 0.075mm	32	0.862
SdT1271100	127 x 1100 *	0.07mm x 0.05mm	17	0.81
SdT1601500	160 x 1500 *	0.063mm x 0.04mm	15	0.62
SdT165800	165 x 800 *	0.071mm x 0.05mm	25	0.7
SdT1651400	165 x 1400 *	0.071mm x 0.04mm	16	0.76
SdT1741700	174 x 1700 *	0.063mm x 0.032mm	13	0.61
SdT2001400	200 x 1400 *	0.071mm x 0.04mm	12	0.8
SdT2021760	202 x 1760 *	0.05mm x 0.032mm	10	0.6
SdT2161860	216 x 1860 *	0.045mm x 0.030mm	9	0.518
SdT2542000	254 x 2000 *	0.04mm x 0.028mm	8	0.5
SdT2852235	285 x 2235 *	0.036mm x 0.025mm	7	0.439
SdT3252300	325 x 2300 *	0.035mm x 0.025mm	5	0.45
SdT4003100	400 x 3100 *	0.035mm x 0.019mm	3	0.369

# SPECIFICATION - REVERSED MESH BELT

Reversed Plain Dutch Weave



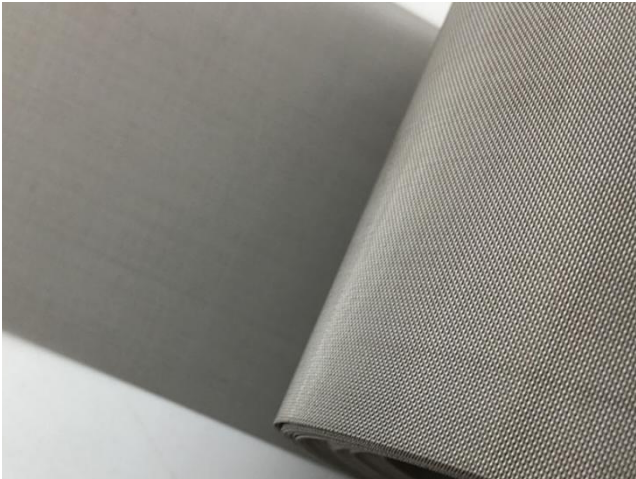
Reversed Twilled Dutch Weave



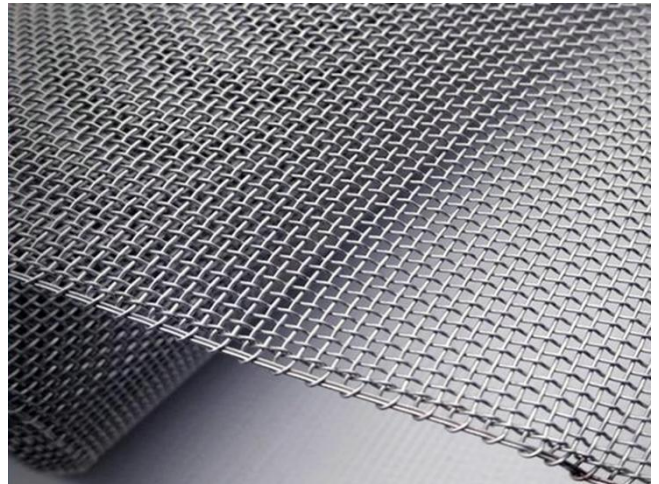
Code	Mesh Warp × Weft	Wire diameter Warp × Weft
RVS048100	48 × 10	0.5mm × 0.5mm
RVS072015	72 × 15	0.45mm × 0.45mm
RVS110014	110 × 14	0.35mm × 0.4mm
RVS120016	120 × 16	0.36mm × 0.45mm
RVS132017	132 × 17	0.30mm × 0.45mm
RVS150018	150 × 18	0.28mm × 0.45mm
RVS072015	160 × 18	0.28mm × 0.45mm
RVS072015	160 × 21	0.28mm × 0.37mm
RVS072015	180 × 18	0.26mm × 0.4mm
RVS072015	200 × 40	0.17mm × 0.3mm
RVS072015	240 × 40	0.15mm × 0.3mm
RVS072015	320 × 40*	0.14mm × 0.27mm
RVS072015	290 × 70*	0.09mm × 0.19mm
RVS072015	400 × 120*	0.06mm × 0.1mm



# MESH ROLL DETAILS



Wire mesh with normal cut edge



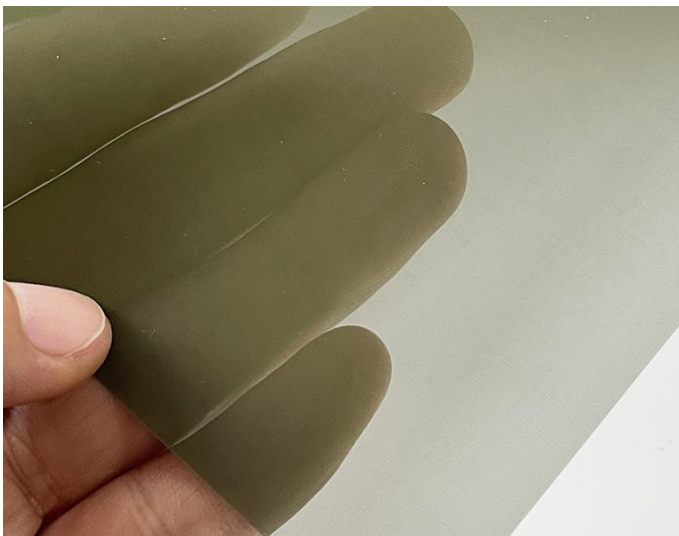
wire mesh with selvage edge



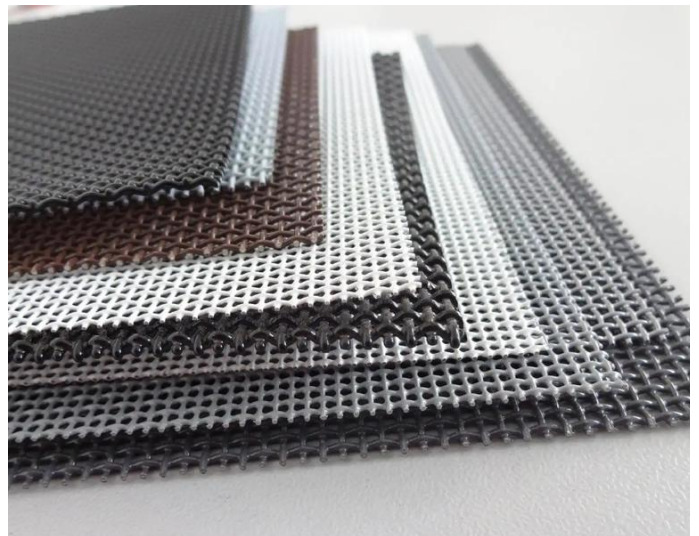
SS wire mesh in high transparency



Extra wide stainless steel wire mesh



Stainless steel mesh with Teflon coating



SS mesh with Aksu coating used as security screen

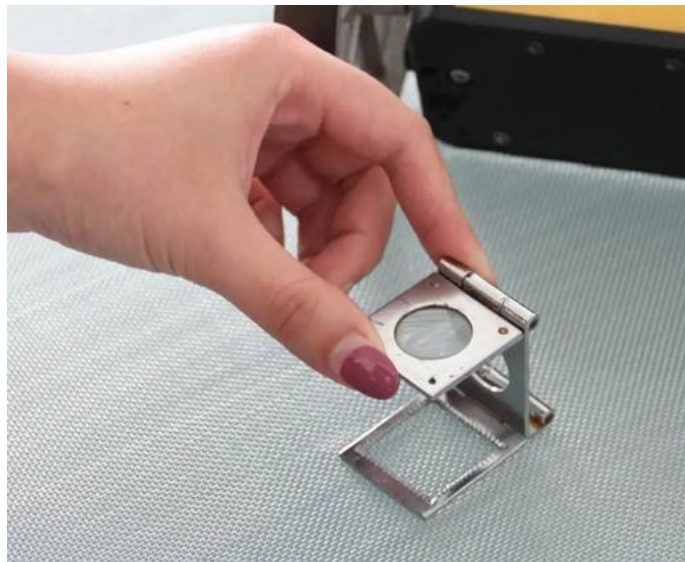
# PRODUCTION & STOCK



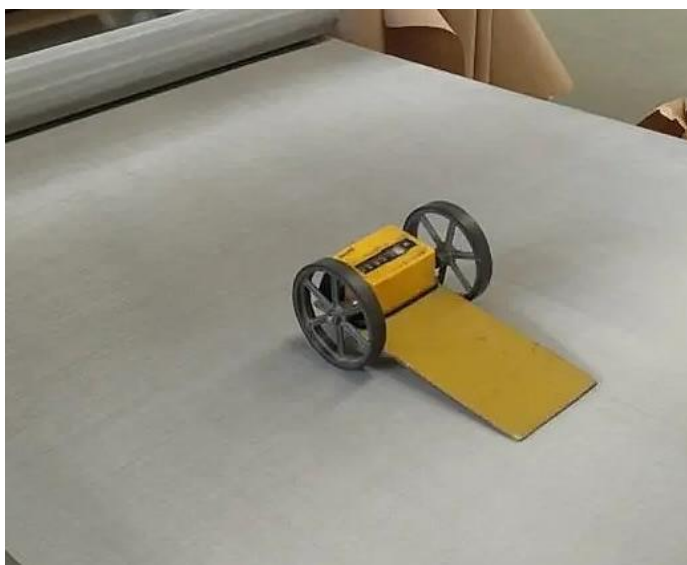
# TEST & PACKING



**Wire Diameter Test**



**Mesh Count Test**



**Woven Mesh Roll Length Measurement**



**Woven Mesh Roll Width Measurement**



**Woven Mesh Material Test**



**Woven Mesh Packing After Testing**

# FILTALLOY



**FILTALLOY TECHNOLOGY LTD.**

Web: [www.alloyfilter.com](http://www.alloyfilter.com)

Mob: +86 13313087837 (Whatsapp)

Email: [info@alloyfilter.com](mailto:info@alloyfilter.com)

Add: High-Tech Industrial Zone, Henbgshui, Hebei, China 053000